

# ZOTALIN<sup>®</sup>

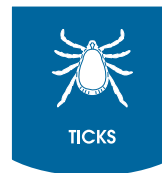
## Dimpylate 15%



### ECTOPARASITICIDE COLLAR FOR DOGS



4 MONTHS OF  
PROTECTION



TICKS



FLEAS

ZOTALIN<sup>®</sup> Collar is a dimpylate-based antiparasitic collar for dogs. Dimpylate is an external antiparasitic belonging to the organophosphate group, which inhibits the cholinesterase of the parasite. It is effective against ticks (*Dermacentor variabilis*, *Otobius megnini*, *Rhipicephalus sanguineus*) and fleas (*Ctenocephalides canis*, *Ctenocephalides felis*, *Pulex irritans*).



# ZOTALIN®

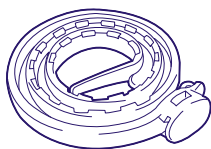
## Dimpylate 15%



### COMPOSITION

Dimpylate	15%
Excipients q.s.p.	100%

### FORMATS AVAILABLE



44 g y 65 cm de longitud



FT



FDS

YouTube

To request the technical specifications and safety sheet, see demonstration videos or for further information scan this code:



## PHARMACOLOGICAL

### PROPERTIES:

ZOTALIN® Collar is an antiparasitic collar for dogs, of which the active ingredient is dimpylate. Dimpylate is an external antiparasitic belonging to the organophosphate group. The antiparasitic collar exerts its action by inhibiting the cholinesterase of the parasite. It is effective against:

- Ticks: *Dermacentor variabilis*, *Otobius megnini* and *Rhipicephalus sanguineus*.
  - Fleas: *Ctenocephalides canis*, *Ctenocephalides felis* and *Pulex irritans*.
- Dimpylate is metabolised through hydrolysis of the phosphoesteric bond, either directly or after oxidation to the corresponding oxidised analogue, diazoxon, which is more toxic but less stable than dimpylate. This metabolism is slow in the parasite, so it maintains its selective toxicity, while in mammals toxicity is low, due to their faster metabolism.

### THERAPEUTIC INDICATIONS:

The antiparasitic collar is suitable for external parasitosis caused by fleas (*Ctenocephalides felis*, *Pulex irritans*) and the prevention of infestations caused by ticks (*Dermacentor variabilis*, *Otobius megnini*, *Rhipicephalus sanguineus*).

REGISTER No.: 600 ESP

USE BIOCIDES SAFELY. ALWAYS READ THE LABEL AND PRODUCT INFORMATION BEFORE USE.

### Laboratorios Zotal S.L.

Ctra. Nacional 630, km. 809.  
41900 Camas (Sevilla) SPAIN  
Tel.: +34 954 390 204 Fax: +34 954 395 516  
Email: zotal@zotal.com



e fr

USER INFORMATION: +34 954 395 297

www.zotal.com